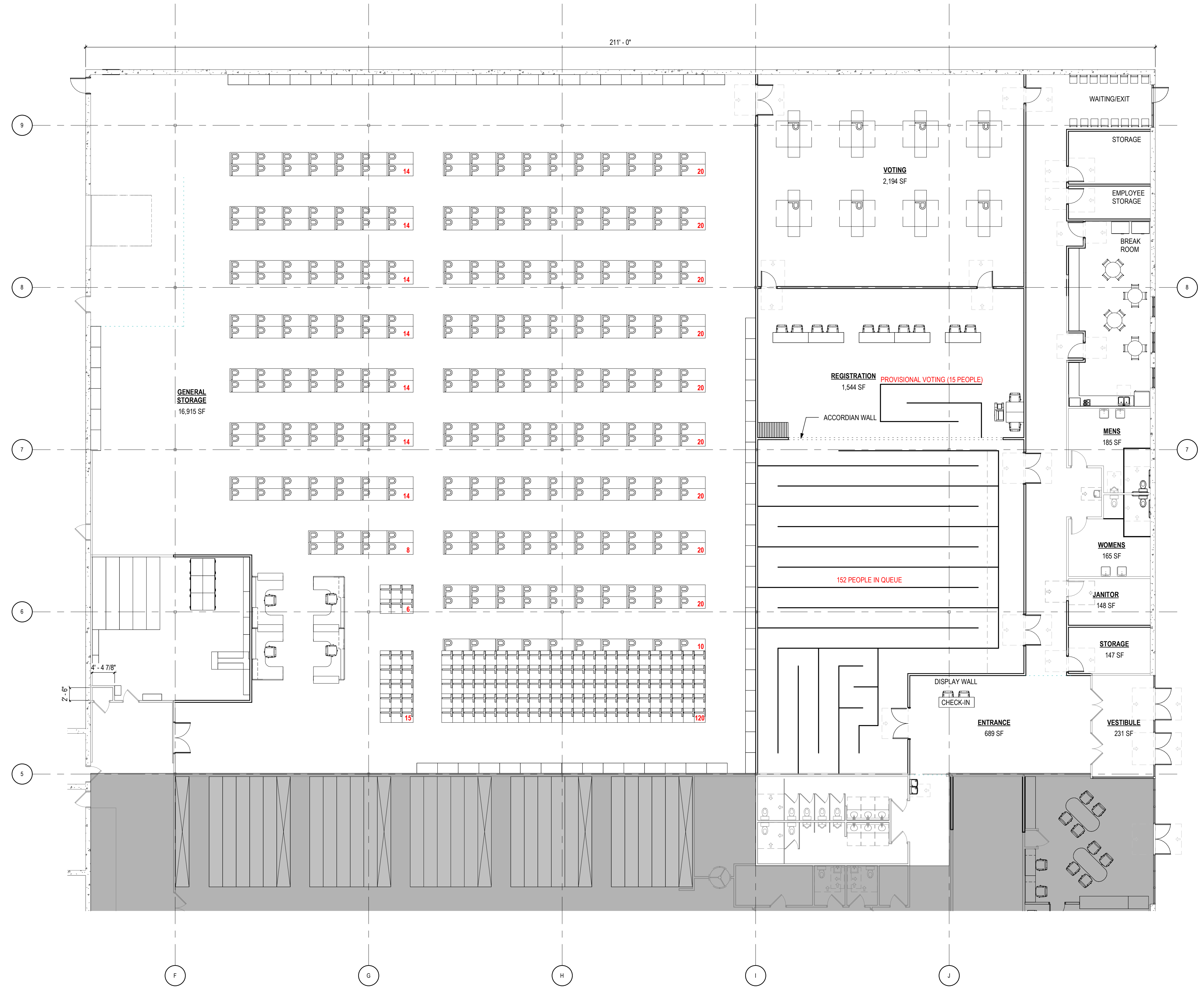


TOTAL COUNTS:  
P = 296  
T = 141

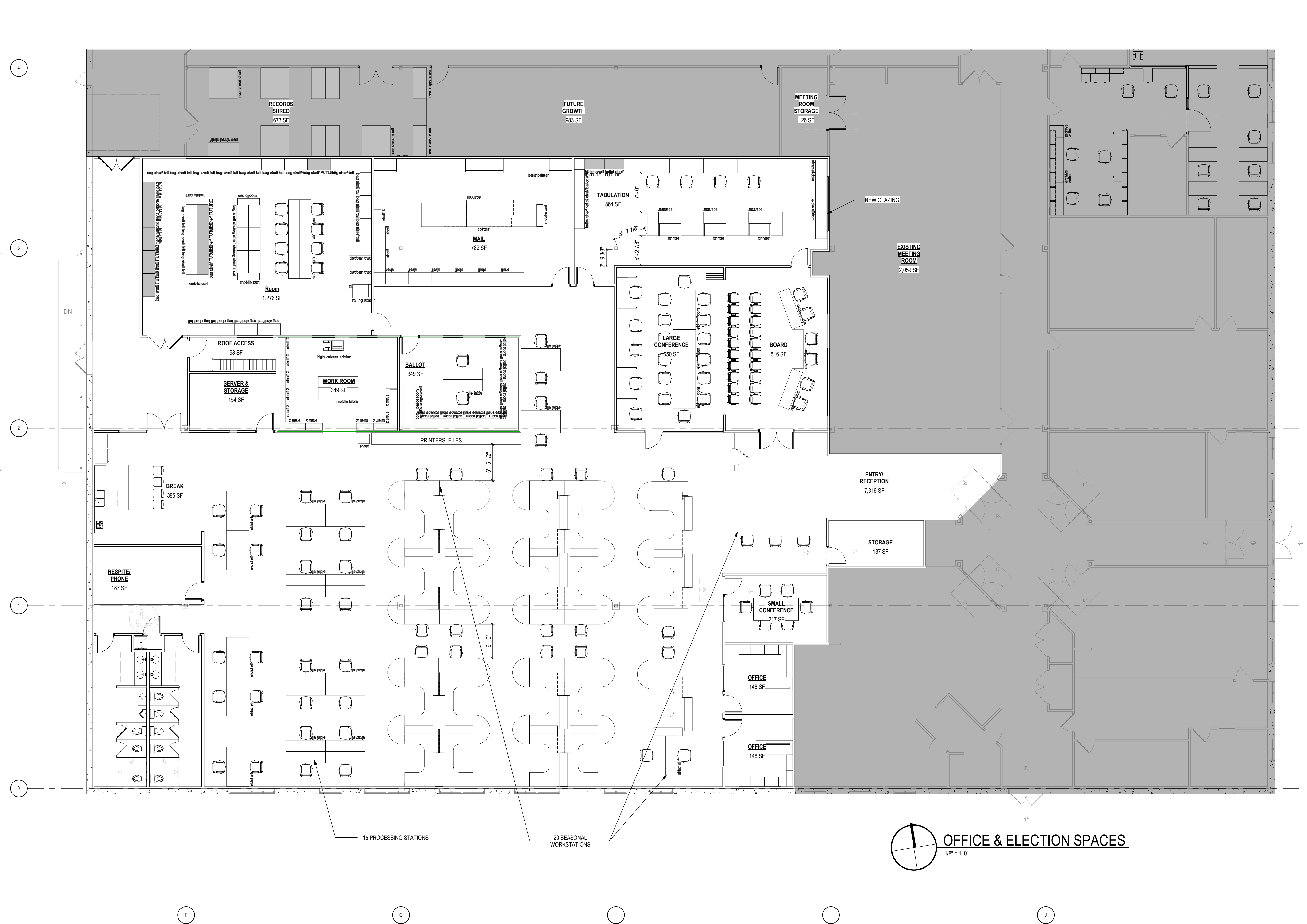


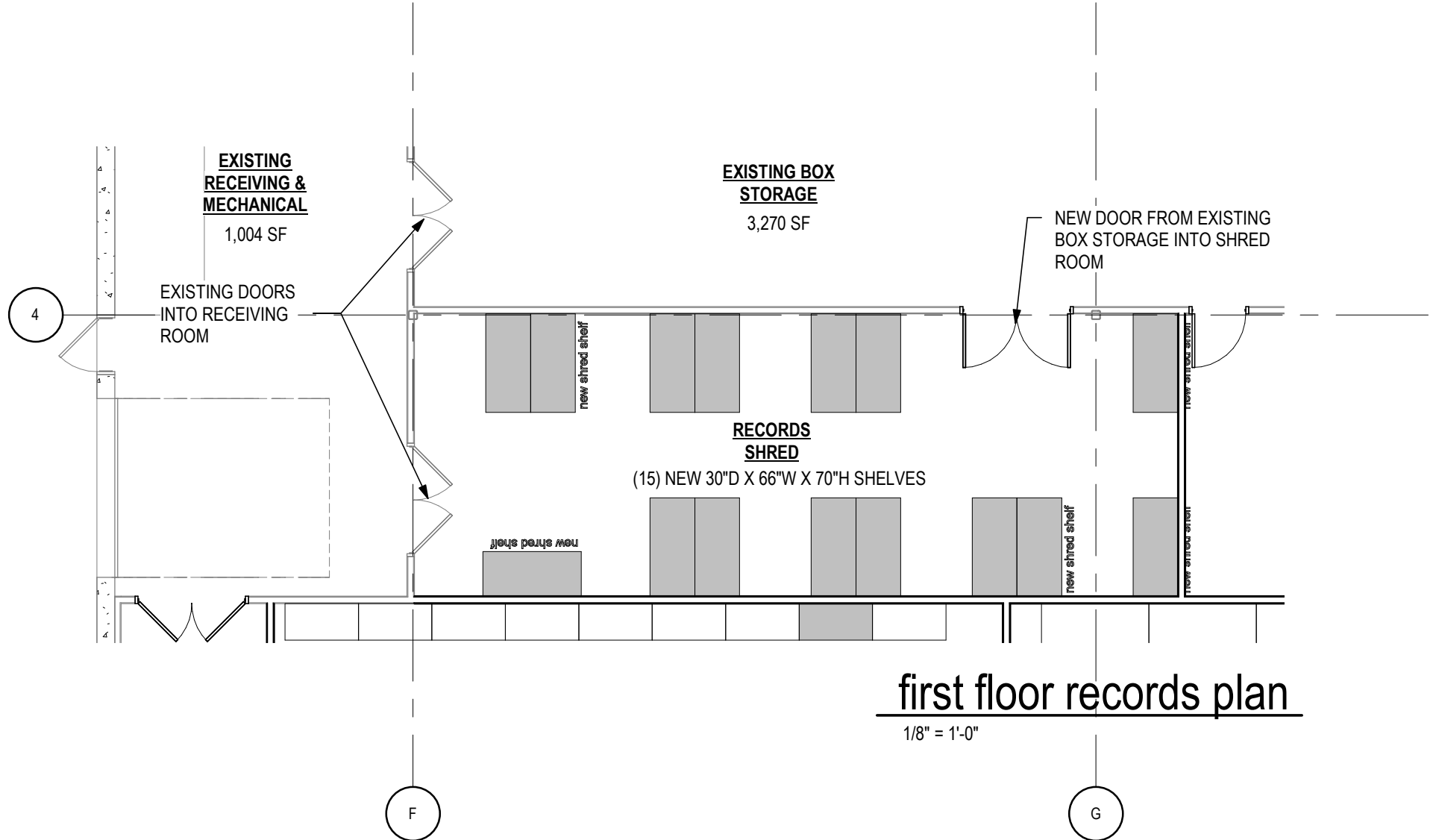
first floor plan  
3/32" = 1'-0"



# 2079 NORTH U.S. HIGHWAY 23

## BOE & RECORDS SPACE PLANNING ELECTION TIME





5

DEDICATED  
ENTRY RECORDS  
OFFICE

**ARCHIVE VAULT**

Area  
450 SF

**PUBLIC AREA**

Area  
796 SF

4

**WORKSTATIONS**

Area  
386 SF

**OFFICE**

Area  
142 SF

**WORK ROOM**

Area  
502 SF

